

The Harlow

Craftsman bungalow with side attached garage



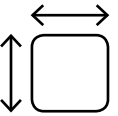
The Harlow provides a space perfect for two people at any age. Build this home as a slab-on-grade and have virtually zero steps throughout, or build it with a basement to get more space! The main floor provides all the amenities needed in the perfect amount of space that doesn't cramp your lifestyle. Want a larger garage? There is room to modify without affecting the front curb appeal. Just deepen the garage and have ample space for whatever it is that you need it for.



2



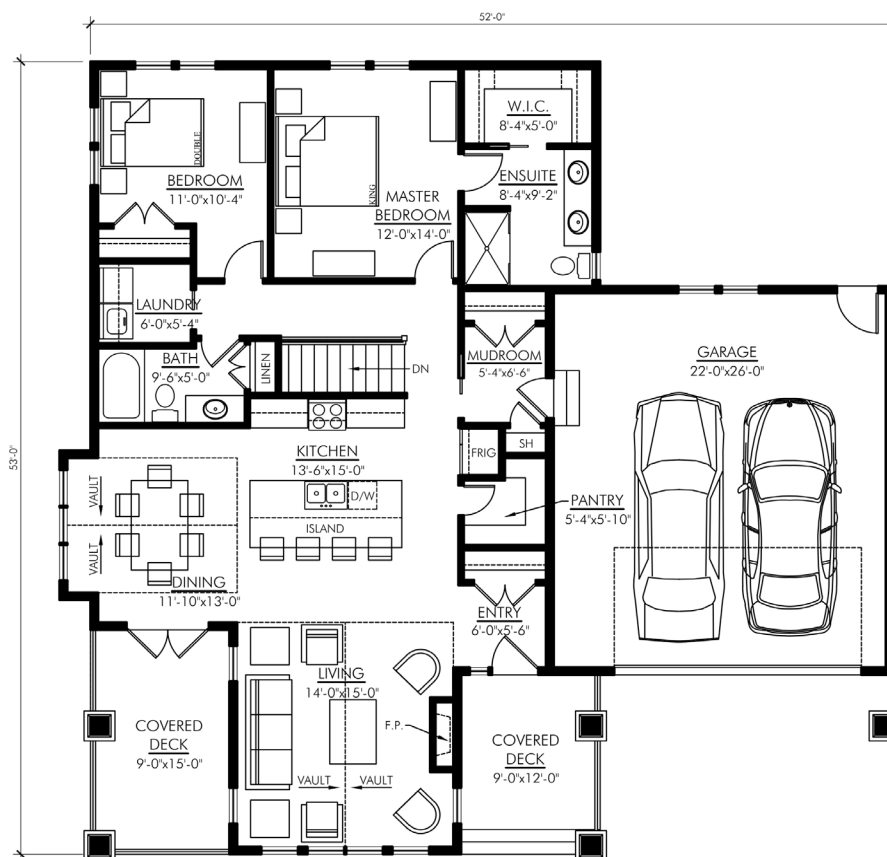
2



1,450



Double Attached



YOUR VISION, OUR EXPERIENCE, YOUR BUDGET

Ph 403.783.3306
Fax 403.783.3314

admin@vleemingconstruction.com
www.vleemingconstruction.com



R.R. #3 Lacombe, AB T4L 2N3