

# The Dexterity

1.5 storey craftsman with finished walkout basement



Get the character and curb appeal without breaking the bank. Enjoy having the craftsman look with a layout suitable to any growing family. The Dexterity provides the perfect entertaining space on the mainfloor and living space on the upper level. Build this home to suit you and have the freedom of choosing all your finishes.

Designed for Central Alberta's newest development, Sixty West at Sylvan Lake, and suiting for most other developments, acreages and farms. Call or email to inquire.



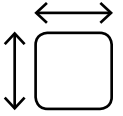
SIXTY WEST



4



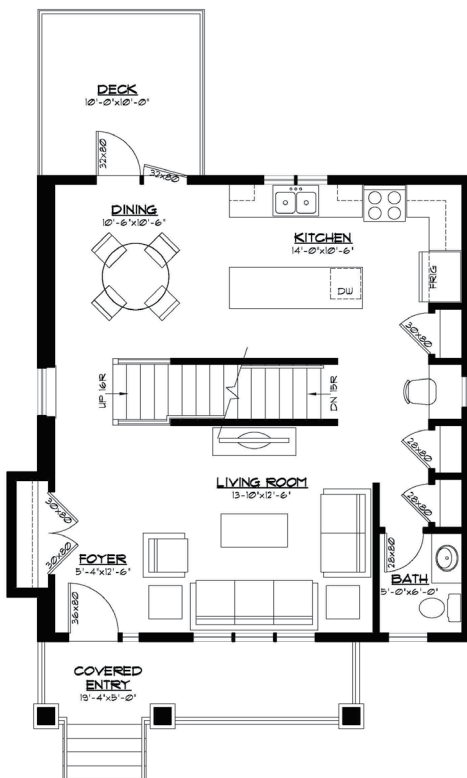
3.5



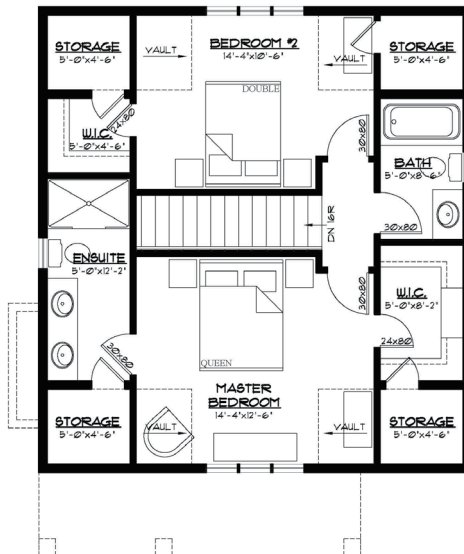
2,088



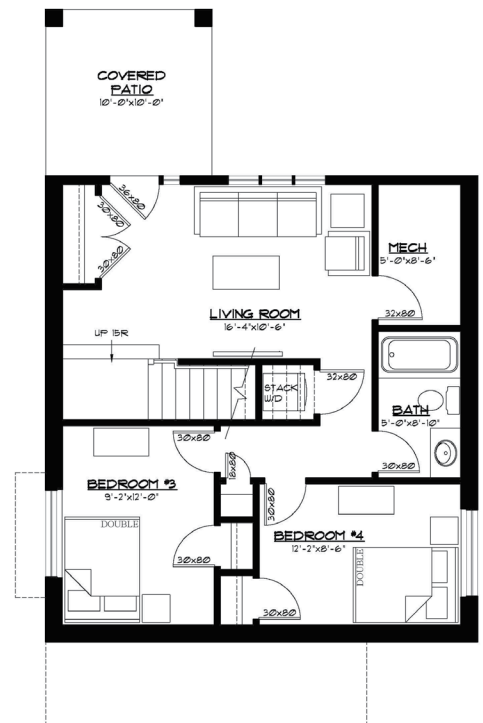
Detached  
Optional



Main floor 742 Ft<sup>2</sup>



Upper floor 618 Ft<sup>2</sup>



Optional Basement 728 Ft<sup>2</sup>



**YOUR VISION, OUR EXPERIENCE, YOUR BUDGET**

Ph 403.783.3306  
Fax 403.783.3314

admin@vleemingconstruction.com  
www.vleemingconstruction.com



R.R. #3 Lacombe, AB T4L 2N3