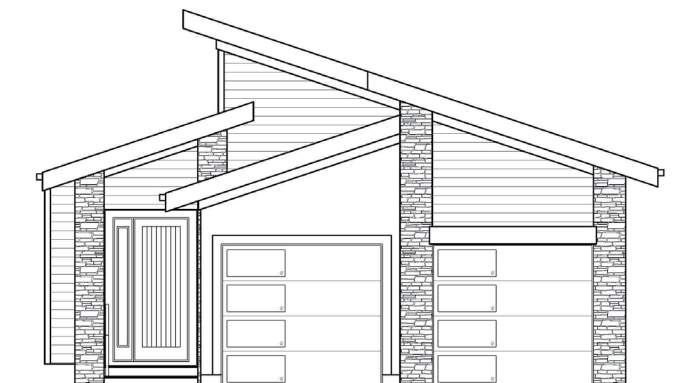


The Wren

Contemporary bungalow with front attached garage



This beautiful contemporary bungalow gives you ample space on the main floor with 2 bedrooms, the laundry room, 2 bathrooms and open concept living. Develop the basement for an additional 2 bedrooms, 1 bathroom and large sized rec room.

Designed for Central Alberta's newest development, Sixty West at Sylvan Lake, and suiting for most other developments, acreages and farms. Call or email to inquire.



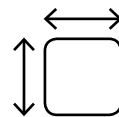
SIXTY WEST



4



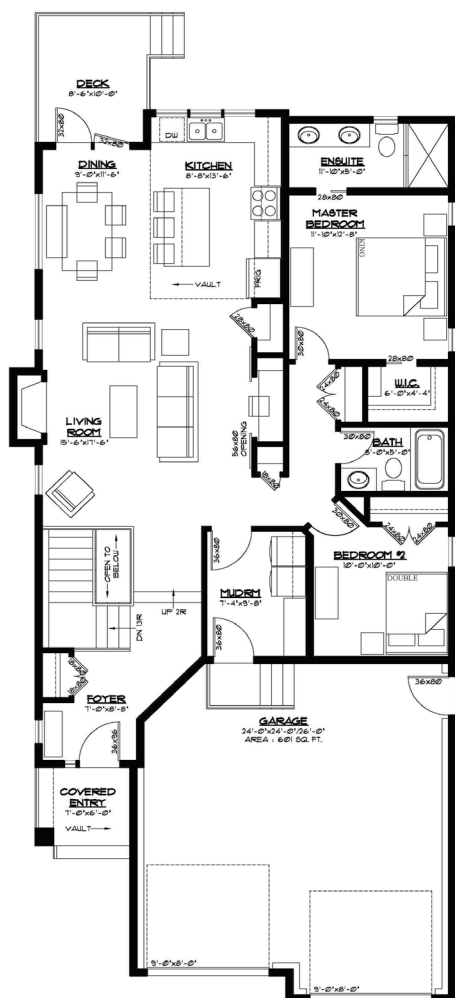
3



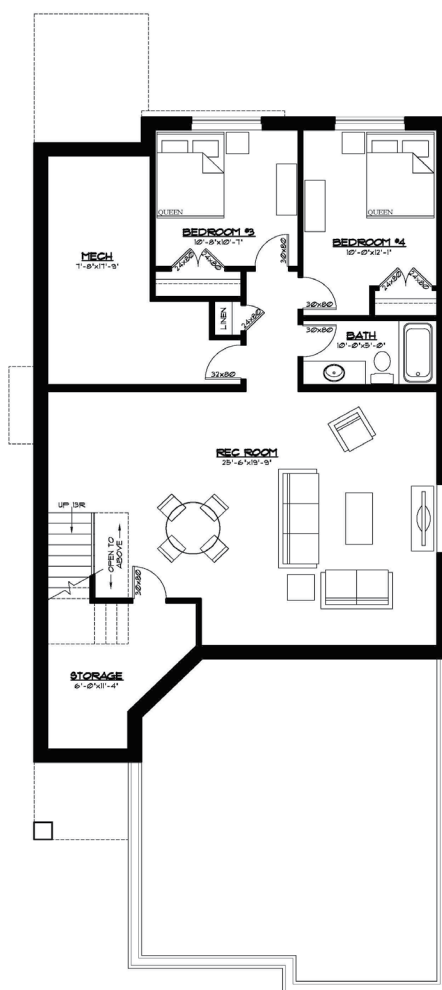
2,726



Double Attached



Main floor 1366 Ft²



Optional Basement 1360 Ft²



YOUR VISION, OUR EXPERIENCE, YOUR BUDGET

Ph 403.783.3306
Fax 403.783.3314

admin@vleemingconstruction.com
www.vleemingconstruction.com



R.R. #3 Lacombe, AB T4L 2N3