

The Glade

Modern prairie bungalow with front attached garage



This bungalow gives you an amazing main floor with open concept living space and 3 bedrooms! Develop the basement for an additional 2 bedrooms, a jack & jill bathroom and large sized recroom.

Designed for Central Alberta's newest development, Sixty West at Sylvan Lake, and suiting for most other developments, acreages and farms. Call or email to inquire.



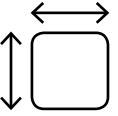
SIXTY WEST



5



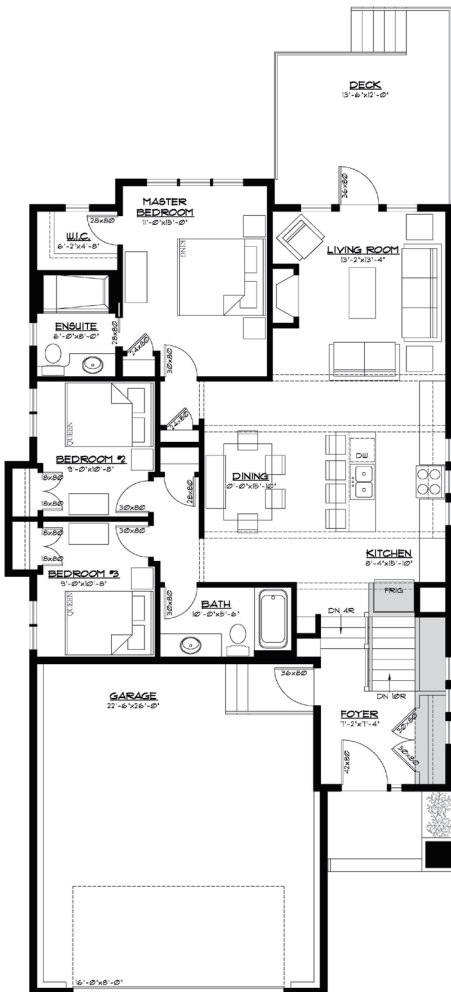
3



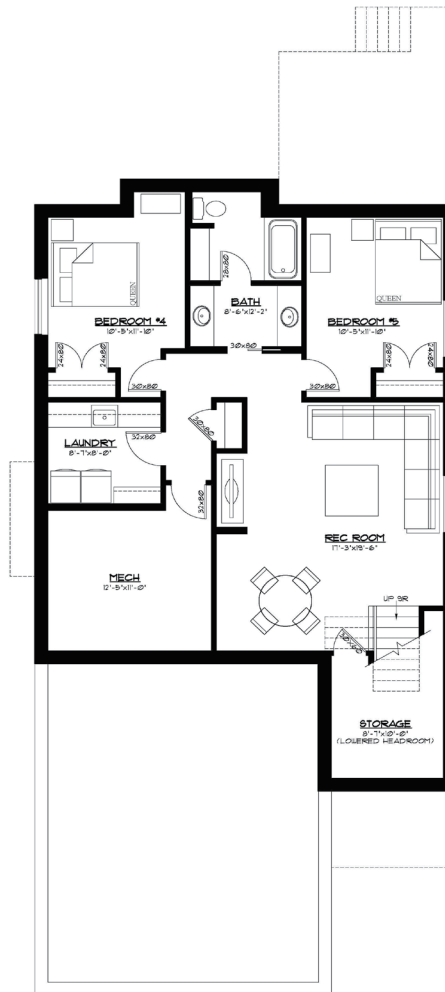
2,579



Double Attached



Main floor 1,298 Ft²



Optional Basement 1,281 Ft²



YOUR VISION, OUR EXPERIENCE, YOUR BUDGET

Ph 403.783.3306
Fax 403.783.3314

admin@vleemingconstruction.com
www.vleemingconstruction.com



R.R.#3 Lacombe, AB T4L 2N3