

# The Kodak

## Farmhouse bungalow with finished basement



Ideal for acreages and rural properties, this farmhouse boasts all the amenities for a growing family. Enjoy the convenience of the attached garage with a designated mudroom and walk-through pantry!

An open living space great for entertaining and a great rumpus room for the whole family to enjoy.

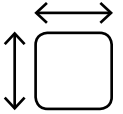
Need more space? this design can easily accommodate additional living space in a 1.5 story concept without increasing footprint!



4



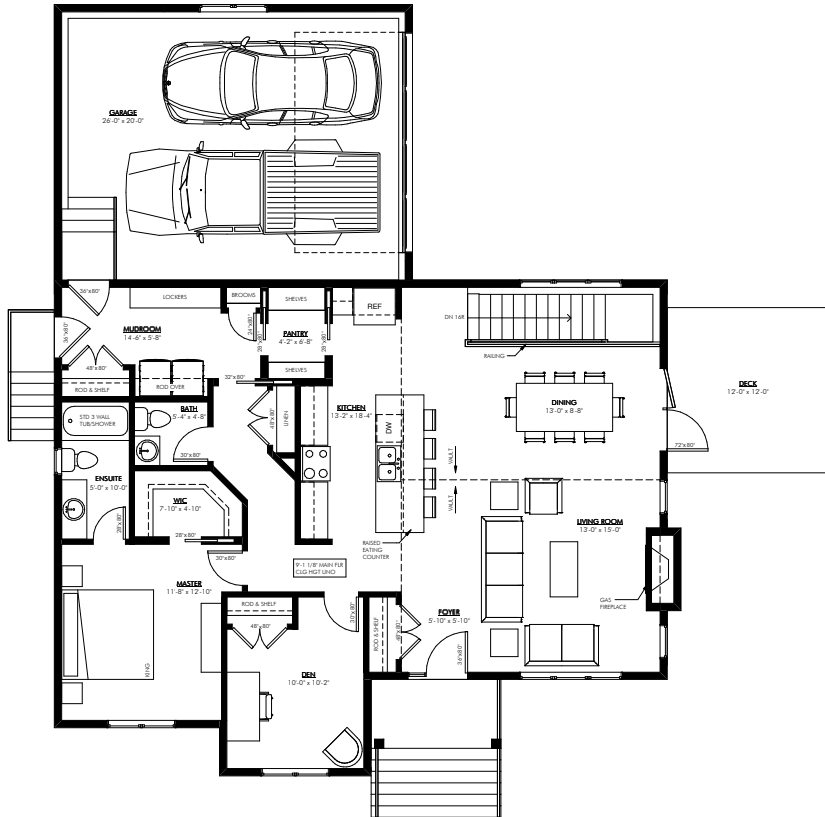
2.5



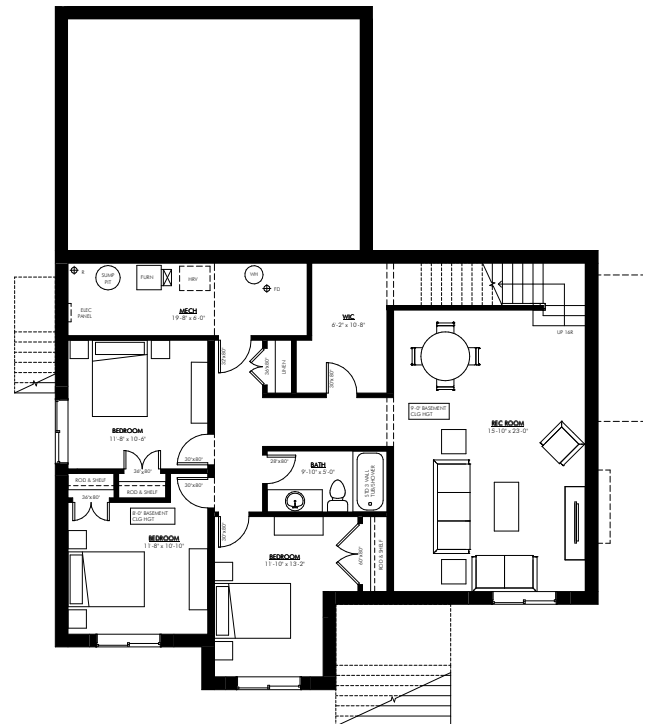
2,820



Attached  
Double



Main floor 1410 Ft<sup>2</sup>



Optional Basement 1410 Ft<sup>2</sup>



**YOUR VISION, OUR EXPERIENCE, YOUR BUDGET**

Ph 403.783.3306  
Fax 403.783.3314

admin@vleemingconstruction.com  
www.vleemingconstruction.com



R.R.#3 Lacombe, AB T4L 2N3