

# The Rayna

1.5 storey farmhouse with a walkout basement



Packed with character and has a layout great for any kind of family, the Rayna features an open concept living on the main floor and spacious bedrooms on the upper floor. Finish the basement and enjoy even more entertaining space with a walkout basement!

Designed for Central Alberta's newest development, Sixty West at Sylvan Lake, and suiting for most other developments, acreages and farms. Call or email to inquire.



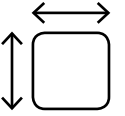
SIXTY WEST



4



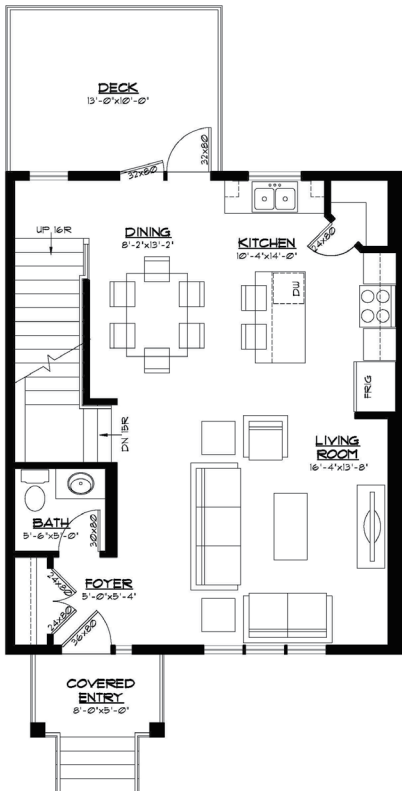
2.5



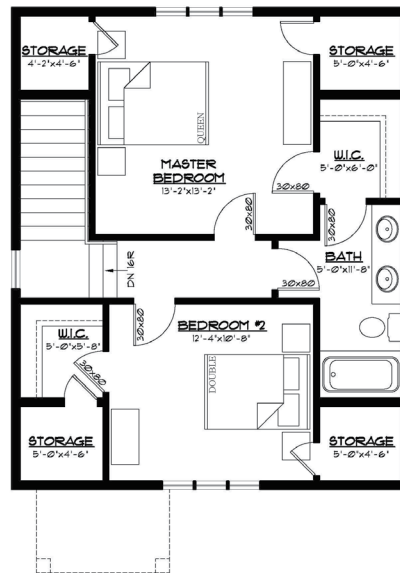
1,982



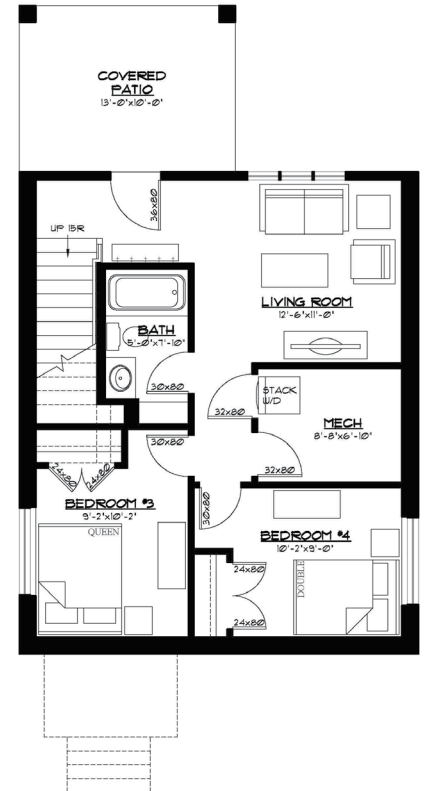
Detached  
Optional



Main floor 696 Ft<sup>2</sup>



Upper floor 590 Ft<sup>2</sup>



Optional Basement 696 Ft<sup>2</sup>



**YOUR VISION, OUR EXPERIENCE, YOUR BUDGET**

Ph 403.783.3306  
Fax 403.783.3314

admin@vleemingconstruction.com  
www.vleemingconstruction.com



R.R. #3 Lacombe, AB T4L 2N3