

The Meadowlark

Craftsman bungalow with finished basement



This amazing craftsman bungalow is one of a kind and is ready to build with the newest and most innovative building envelope! Achieve a net zero structure that is offered by no other builder in Central Alberta and reap the benefits of a highly insulated home and lower utility bills. Take it a step further and equip this home with solar panels to create a credit on your power bills! In addition to its R-values, this home boasts many high end features that is rarely seen in today's housing market. Personalize this home how you want it!



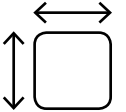
Green Home



3



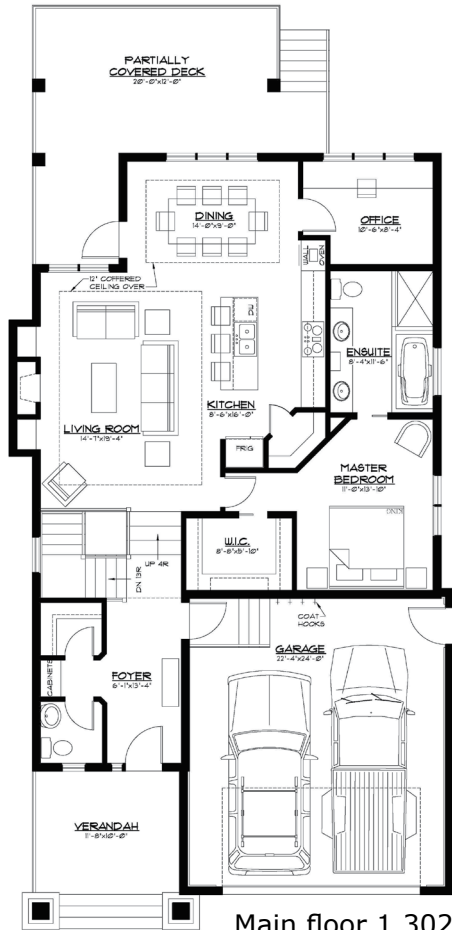
2.5



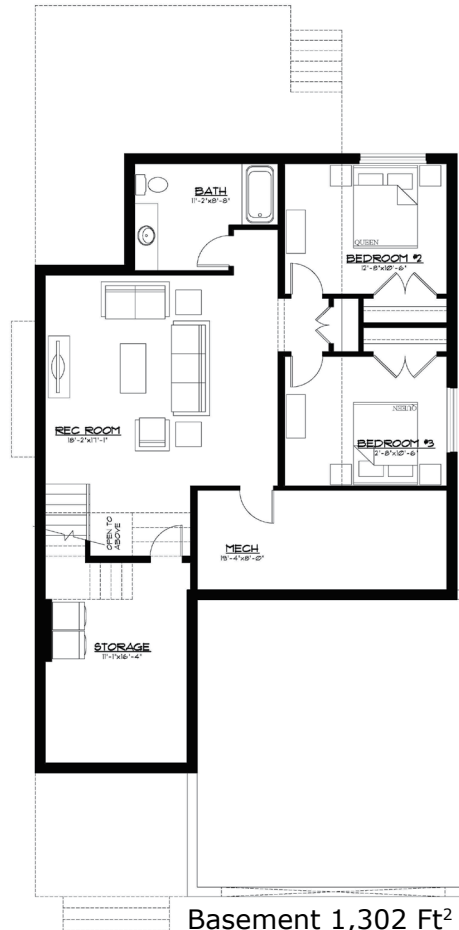
2,604



Double Attached



Main floor 1,302 Ft²



Basement 1,302 Ft²

Save exponentially on utility bills!

When Built to the Vleeming Standards & More!

- ✓ Net Zero Building Envelope
- ✓ Effective R-Values that substantially exceed building codes! (R34 Above Grade Walls, R42 Basement Walls, R26 Basement Floor, R16 Garage Floor, R80 Roof)
- ✓ European Tilt & Turn Double Seal Triple Pane Windows



YOUR VISION, OUR EXPERIENCE, YOUR BUDGET

Vleeming Construction Ltd
RR3 Lacombe, AB T4L 2N3

Ph: 403.783.3306
info@vleemingconstruction.com

www.vleemingconstruction.com

