

The Clearbrook

2 storey modern prairie bi-level with attached garage



Great for the family that requires allot of space. and enjoys entertaining. With 5 bedrooms split between the upper, main and lower levels, you have the flexibility to choose where the kids and/or guests sleep.

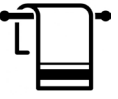
Designed for Central Alberta's newest development, Sixty West at Sylvan Lake, and suiting for most other developments, acreages and farms. Call or email to inquire.



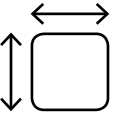
SIXTY WEST



5



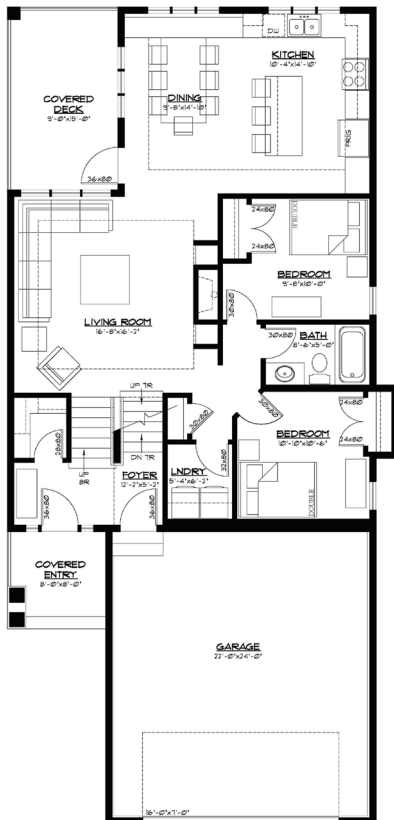
3



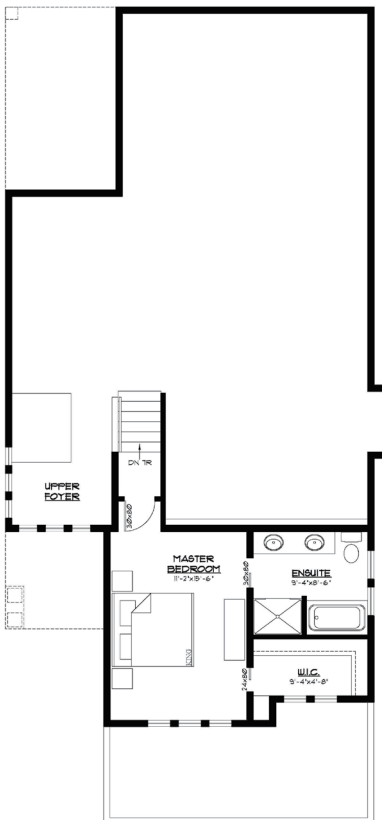
2,683



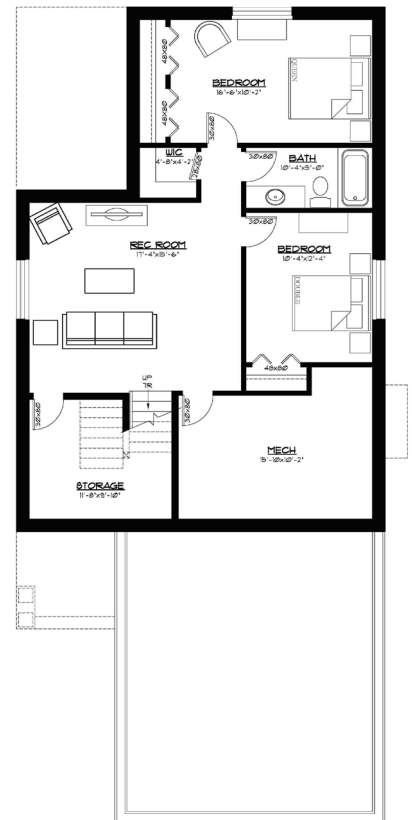
Attached



Main floor 1155 Ft²



Upper floor 373 Ft²



Optional Basement 1155 Ft²



YOUR VISION, OUR EXPERIENCE, YOUR BUDGET

Ph 403.783.3306
Fax 403.783.3314

admin@vleemingconstruction.com
www.vleemingconstruction.com



R.R.#3 Lacombe, AB T4L 2N3